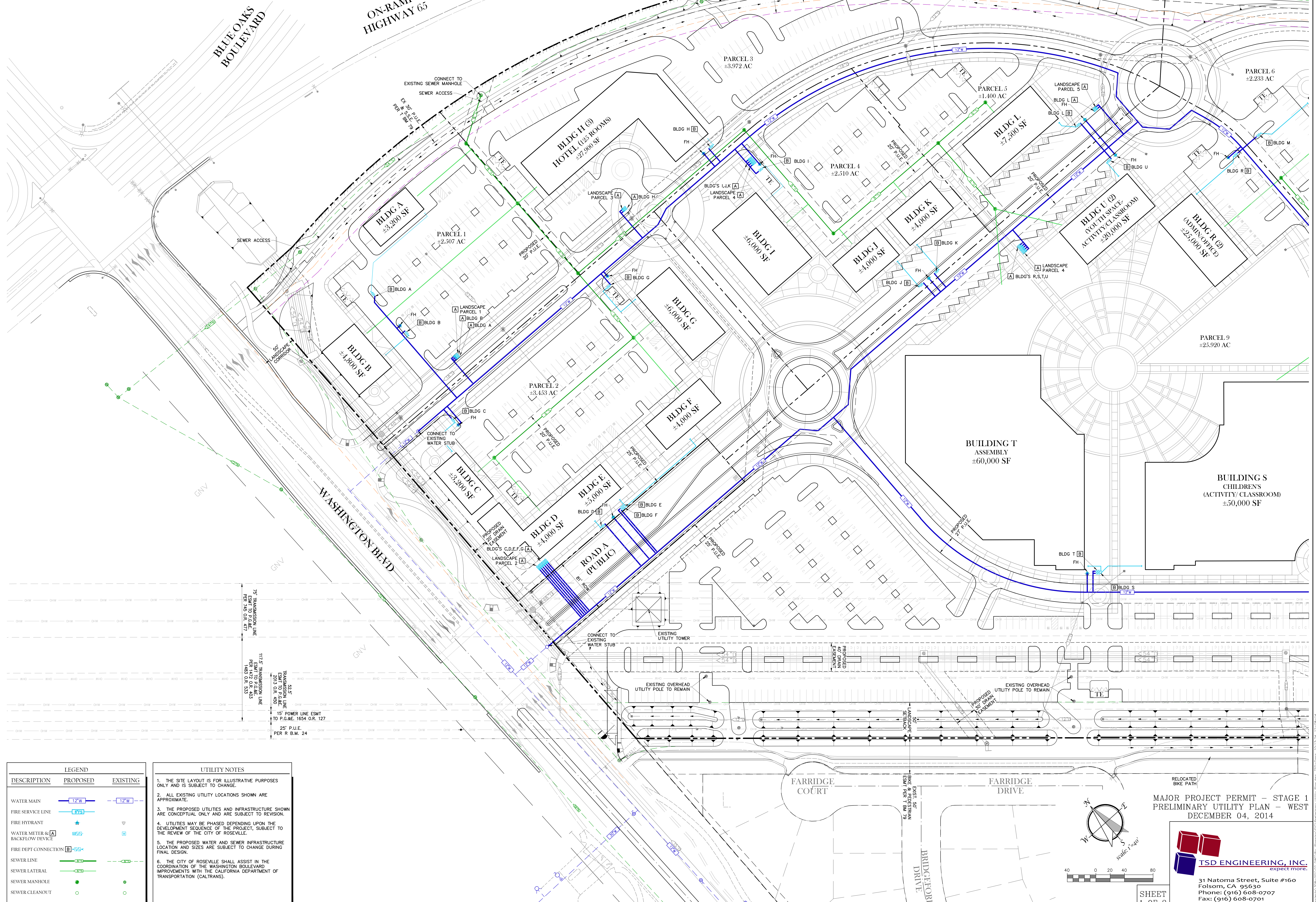


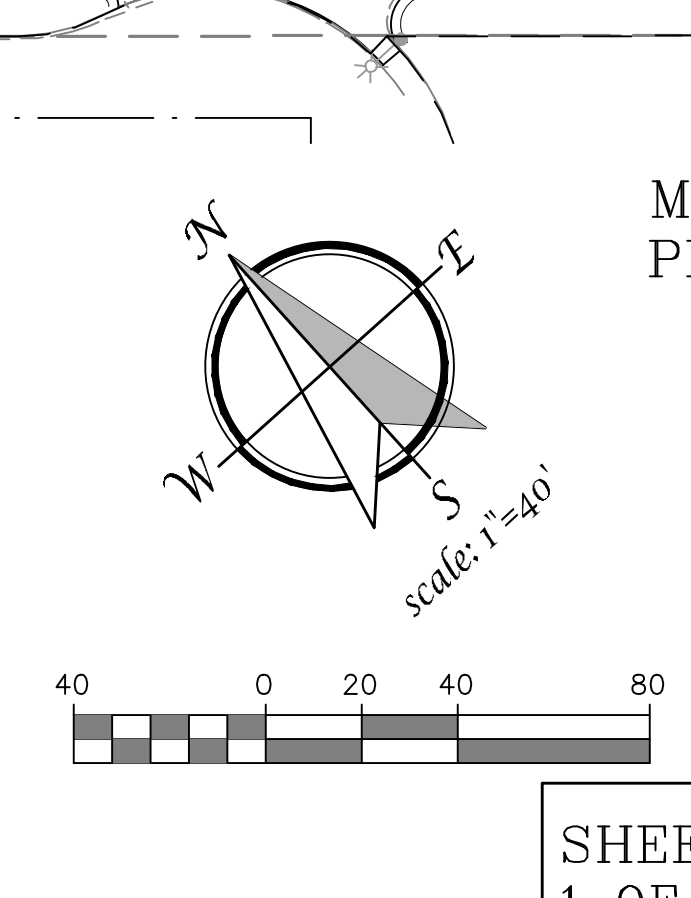
PRELIMINARY UTILITY PLAN- WEST NCRSP - PARCEL 49

MAJOR PROJECT PERMIT - STAGE 1
ROSEVILLE, CA
SHEET 1 OF 2

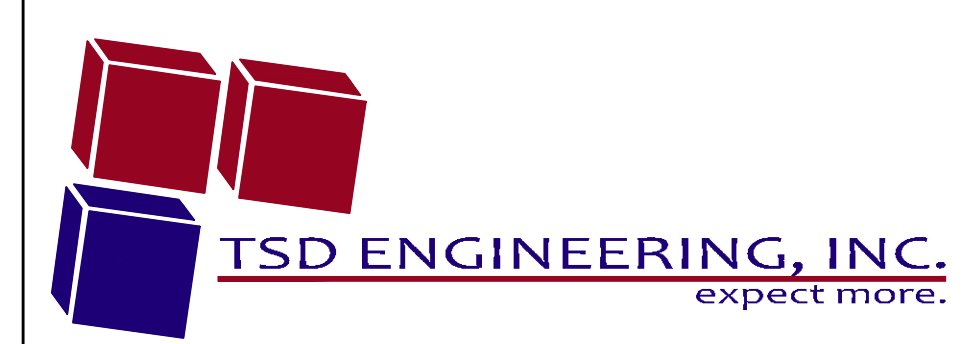


DESCRIPTION	PROPOSED	EXISTING
WATER MAIN		
FIRE SERVICE LINE		
FIRE HYDRANT		
WATER METER & BACKFLOW DEVICE		
FIRE DEPT CONNECTION		
SEWER LINE		
SEWER LATERAL		
SEWER MANHOLE		
SEWER CLEANOUT		

- UTILITY NOTES**
1. THE SITE LAYOUT IS FOR ILLUSTRATIVE PURPOSES ONLY AND IS SUBJECT TO CHANGE.
 2. ALL EXISTING UTILITY LOCATIONS SHOWN ARE APPROXIMATE.
 3. THE PROPOSED UTILITIES AND INFRASTRUCTURE SHOWN ARE CONCEPTUAL ONLY AND ARE SUBJECT TO REVISION.
 4. UTILITIES MAY BE PHASED DEPENDING UPON THE DEVELOPMENT SEQUENCE OF THE PROJECT, SUBJECT TO THE REVIEW OF THE CITY OF ROSEVILLE.
 5. THE PROPOSED WATER AND SEWER INFRASTRUCTURE LOCATION AND SIZES ARE SUBJECT TO CHANGE DURING FINAL DESIGN.
 6. THE CITY OF ROSEVILLE SHALL ASSIST IN THE COORDINATION OF THE WASHINGTON BOULEVARD IMPROVEMENTS WITH THE CALIFORNIA DEPARTMENT OF TRANSPORTATION (CALTRANS).



MAJOR PROJECT PERMIT - STAGE 1
PRELIMINARY UTILITY PLAN - WEST
DECEMBER 04, 2014



31 Natoma Street, Suite #160
Folsom, CA 95630
Phone: (916) 608-0707
Fax: (916) 608-0701

SHEET
1 OF 2